

# XVR

## Quick Start Guide

Please read the Quick Start Guide carefully before using the product and keep it.  
 Related tools and documents of products, please download from [www.herospeed.net](http://www.herospeed.net).

1

### 1.Statement

Thank you for using our product, please read this manual carefully before use.  
 This manual is for XVR PGH/PD/A/DB/PA/D/L housings.  
 This manual may contain places that are technically inaccurate or where the product functions and operations do not match or where errors are printed. The contents of this manual will be updated according to the enhancement of this manual without prior notice. If this description of the product in the manual and the physical does not match, shall prevail in kind.

### 2.Safety Intructions

- This equipment should be installed in a well-ventilated environment. When installing, please keep proper space with the ground. It is conducive to heat dissipation of the machine. Do not block the vents of the equipment, away from the heat source and avoid high temperature environment.
- The device should be installed horizontally, to avoid the installation in a strong vibration position.
- To avoid fire or other hazards caused by short-circuits of the circuit and to prevent the device from getting wet when wet, the device is not waterproof.
- Please select the hard disk recommended by the manufacturer for the XVR (In principle it is recommended to use Seagate, Western Digital monitor level hard drive) work requirements to meet the long time to read and write big data requirements, and please buy from the formal channels to ensure the quality of the hard disk.
- This product can not withstand heavy loads. Do not place heavy objects or multi-layer overlays on this product.
- XVR installation and construction must meet the specifications, may refer to the relevant national or local standards.

2

### 3.Hard disk installation

#### Reminder:

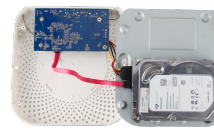
1. Please use the XVR dedicated SATA hard disk recommended by the device manufacturer. Make sure the power is off before installation.
2. Product screw hole location and support hard disk size please prevail in kind delivery, hard disk installation diagram for reference only.

#### 3.1 XVR PD / PDH / PA type shell series hard disk installation is as follows:

- (1) Remove the screws that secure the upper cover and remove the upper cover.
- (2) Align the screw hole on the hard disk with the screw hole on the bottom of the chassis, fix the hard disk with screws on the back of the backplane.



- (3) Connect one end of the hard disk power cable and data cable to the motherboard and the other end to the hard disk.



Notes: Images for instruction use only, the final goods are subjected to the real object.

- (4) Gently close the cover, then screw the cover fixed.



3

#### 3.2 XVR A / DB / D type shell series hard disk installation as follows:

- (1) Unscrew the screws on the back and sides of the chassis and remove the cover.
- (2) Connect the hard disk power cable and data cable to the motherboard and the other end to the hard disk.



- (3) Side of the XVR chassis, aligned with the hard drive screw holes and screw holes in the floor, with a hard disk drive screws.



- (4) Gently close the cover, then screw the cover fixed.



4

#### 3.3 XVR L-type shell series hard disk installation is as follows:

- (1) Unscrew the screw on the back of the chassis and remove the cover.



- (2) Remove the hard disk drive.
- (3) Press and hold the hard disk in the rack from top to bottom.
- (4) Secure the screws on the side of the hard drive bracket.
- (5) The installation of the hard disk rack back to its original location, locked screws.
- (6) Connect the hard disk data cable and power cable.
- (7) Install the cover and lock the screws.



5

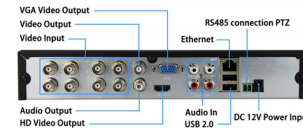
### 4.Rear panel interface description

#### 4.1 XVR rear panel interface description

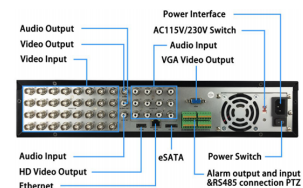
- |  |  |  |  |
|--|--|--|--|
|  | - Ethernet   |  | - RS485 interface to access the PTZ camera   |
|  | - USB interface, access the mouse or U disk  |  | - Alarm interface  |
|  | - HD: HD video output interface  |  | - Power switch interface   |
|  | - VGA: video output interface  |  | - DC 12V power interface   |
|  | - Audio interface: audio input or output interface, marked A-IN for the audio input, marked A-OUT for the audio output |  | - AC 110V-240V power connector   |
|  | - eSATA interface to access the hard disk  |  | - 115V/230V Power supply, the switch to 230V position; access 110V power supply, the switch to 115V position |
|  | - Video input or video interface, mark V-IN for video input and V-OUT for video output on the rear panel               |  |  |

6

#### 4.2 8 Road D-type XVR rear panel interface description



#### 4.3 32-way L-shell rear panel interface description



7

### 5.Local Basic Operation

#### 5.1 Boot up

Make sure the input voltage of the power supply matches the requirements of XVR, make sure that it is connected to the power cable, and make sure that the XVR ground is well grounded. Before powering on, make sure that the monitor or monitor is connected to the video output connector on the rear panel of the device.  
 If the front panel power indicator is off, plug in the power and turn on the power switch on the back panel to start the device. The device starts Firefox, the power light is red. The splash screen will appear on the monitor or monitor screen.

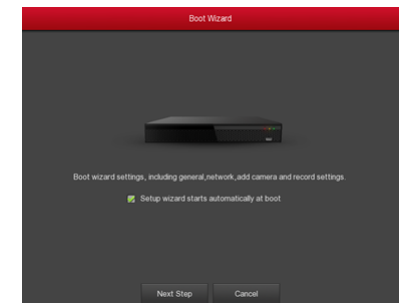


Reminder: If you have previously shut down through the menu, but did not turn off the power switch button on the rear panel of the device, you must first turn off the switch and then reopen to complete the boot.

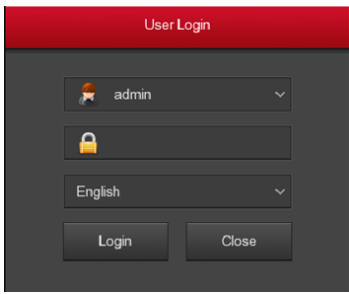
Note: The system default user name is "admin" and the user password is "12345".

#### 5.2 Startup Wizard

You can perform basic configuration on the device through the Power-on Wizard to make the device work normally.



8



Note: If you do not need to set the device, you can click "Cancel" to exit the boot wizard interface. You can also turn off the boot wizard in "Menu → Configuration → General → Device Settings".

Step 1: The device automatically enters the Boot Wizard page after it is powered on. Click Next. The Login System page is displayed. Enter the user name and password to enter the startup wizard general settings page. Step 2: After configuring the basic settings such as language, video mode, video format, and device time in the normal settings, set the current interface parameters and click Next to set other parameters of the interface.

9

• Click "⚙️" to enter the "Record Schedule" interface, set.

### 5.7 Instant playback

Step 1: When the mouse clicks anywhere in the current channel screen, the control bar will automatically pop up below the channel. Step 2: Click "⏮️" to enter the instant playback interface, can play the first 5 minutes of the current channel video.

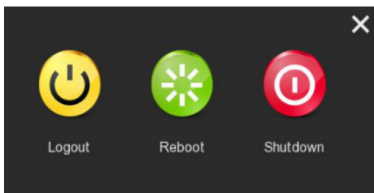
### 5.8 Video playback

Step 1: Click the left mouse button on the preview interface to pop up the shortcut menu, select "Playback" to enter the record playback interface. Step 2: Select date, Channel, More, Left-click to search the file, and the video will start playing to select the video file.

### 5.9 Shut down

Shut down through the main menu (recommended)

- ① Go to Menu> Shut Down and click Shut Down.
- ② Power off the case through the rear panel power switch



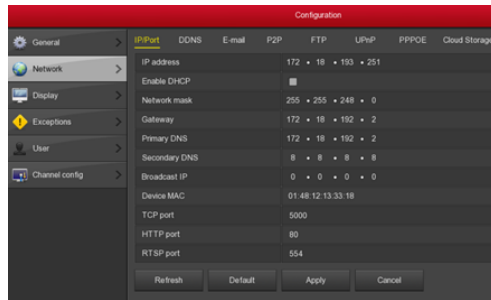
Note: To change the hard drive, open the chassis and cut off the external power supply

13

## 5.3 Network Settings

Before setting the network parameters, make sure the DVR has been properly connected to the network. If there is no routing device in the network, please assign the IP address of the same network segment. If there is a routing device in the network, you need to set the corresponding gateway and subnet mask.

Procedure: Choose Menu> Configuration > Network.



### 5.4 Channel Configuration

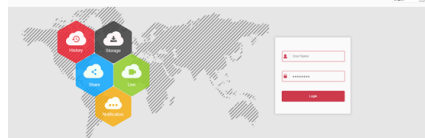
Step 1: Choose "Menu> Configuration> Channel Config". Step 2: Select the signal access type of each channel as required. Step 3: Click "Apply". Modify the restart after the entry into force to complete the configuration operation.

10

## 6.WEB Operation

### 6.1 Login

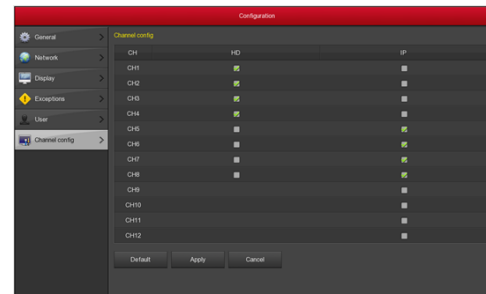
XVR LAN login (in the same router under the computer, also known as intranet)  
 Step 1: Make sure the VTR is on the same network segment as the login computer. If there is no network segment in the computer, add the IP of the same network segment as XVR, such as "192.168.1.99".  
 Step 2: Open IE browser, select Tools → Internet Options → Security → Custom Level → ActiveX controls and plug-ins, all options are enabled.  
 Step 3: Enter the XVR URL: http://192.168.1.88/ (if the XVR port 80 to the other, need to add the port after the change) into the OCX download interface).  
 Step 4: Download and install the OCX plug-in.  
 Step 5: Refresh the IE interface, enter the login interface, select "Simplified Chinese" in the Language drop-down box. Enter Username and Password and click Login.



### 6.2 Preview

After successful login, enter the preview interface, click on the channel name on the left for real-time monitoring.  
 Note: The Web-side can also perform the operations such as system, network, storage, playback, download, upgrade, maintenance, and factory reset on the Web.

14



Note: single channel select signal access mode to follow certain rules, the interface will be automatically reflected in the optional options. The actual access signal should be checked with the signal mode. If a channel selected "HD" mode, you can access the TVI / CVBS / AHD / CVI signal; when switching signals cause abnormal display, you can reconnect the video cable; if a channel is selected "IP" mode, is the IP channel, Can access IP equipment.

Preview interface, the channel displays "HD VIDEO" when there is no video signal on the HD (TVI / CVBS / AHD / CVI) channel. When there is no video signal on the IP channel, the channel displays "NO VIDEO".

11

## 7.Mobile App Operation

Step 1: Use the Android or iOS phone to scan the corresponding QR code, download and install FreeIP APP or Android in the Google application store, iOS phone in the APP store, enter "FreeIP" search. Download and install FreeIP App.



Step 2: Account login  
 Run mobile client, in the sliding sidebar, select "Device Management", the interface jump to the login screen, enter the account number, password login (Note: no account to be registered first).  
 Step 3: Add a device  
 After login, click "Device Management", click "+ Add Device", select "Add Serial Number", after the phone identifies the QR code, Enter the device user name, password and verification code, verification code printed on the random shipping standard label, click "Add" to set the device Note and group, click "Send" after prompted to add success.  
 Step 4: Live preview  
 In the sliding sidebar, select "Live Preview", click the "+" in the preview window to enter the device list, select the touching pen and the channel to be previewed in the group, click "Preview", the selected channel live video will be displayed in the preview interface.  
 Step 5: Playback history  
 Select "History Playback" in the sliding sidebar, click the "+" in the preview window to enter the device list, select the device and the channel to be played back in the group, and click "Play Now" to play back the channel recording from the current zero. Other time recordings can be played back by calendar switching date.

15

## 5.5 IP Channel Configuration

Before accessing and configuring the IP channel, make sure that the IP device is connected to the network. You can add or delete remote IP devices in this interface and view related information.  
 Step 1: Choose "Menu> Camera > Add Device" to enter the IP channel configuration interface.  
 Step 2: Add IPC, there are two ways to automatically add and manually added. Automatically add, click "one click to add" button. Manually add a device, click Add, the remote device interface automatically searches for LAN devices in the "Onvif" or "Private" protocol (if our company IPC recommends selecting "Private"), select the IP device to be added, "Button to complete.  
 Step 3: After the success is added, "Status" is displayed as "🟢"; Indicating the success of the addition; otherwise check the network or add is correct.  
 Step 4: Click "✏️", You can re-edit device channel information, click "🔍", You can modify the encoding parameters related information.

### 5.6 Recording Settings

Description: XVR native acquiescence to open all channels 24 hours of ordinary video.

Steps:  
 Step 1: Choose Menu> Record > Schedlue.  
 Step 2: Select the channel, check the record type (including normal record, motion detect record) and set the record time for this record type.

There are two ways to set the time period.  
 • Sketch in the timeline diagram, hold down the left mouse button, drag the mouse to draw the time period. There are six time periods available for setting each day, and the device will start the corresponding type of recording within the set time range.

12

## 8.Disclaimer

The following exemptions or limitations of liability, please pay special attention to:

1. As a result of the following reasons, resulting in the product or termination of service, the Company for you or a third person personal injury, property losses are not liable for any; not strictly in accordance with the requirements of the correct installation or use; for the protection of national or public interest; Force Majeure; Your own or a third party cause (including but not limited to the use of third-party products, software or components, etc.).
2. The Company does not in any way expressly or by implication warrant that this product is suitable for special purposes or purposes. This product may not be used in medical / safety equipment or other applications where there is a breakdown of the product that could result in life-threatening or personal injury, as well as hazardous or non-humanitarian hazards such as weapons of mass destruction, biological and chemical weapons, nuclear explosions or any unsafe use of nuclear energy use. Any loss or liability arising out of the above use will be at your own risk.
3. This product, when properly installed and used, can detect unauthorized intrusion during a particular delight but can not avoid accidents or personal injury or property damage. In your daily life, you should be vigilant and strengthen your safety awareness.
4. The Company is not responsible for any indirect, incidental, special punitive damages, claims, loss of property or loss of any data or documents. To the maximum extent permitted by law, Longview shall not be liable for more than the amount you paid for the purchase of this product.

16